

Cherry at Stone Orchard



Robert Craig, Agent
rcraig@wintergreenrealestate.com
Office: (434) 361-0500
Cell: (703) 389-2337

*Homes Built By
Oaktree Builders, Inc.*



Lifestyle Homes in the Villages of Stoney Creek

The Cherry is a creatively-designed ranch-style home with an open floor plan designed for gracious living and the Wintergreen lifestyle. This 1,627 sq.ft. home has a sizeable, sun-filled great room and kitchen and an adjoining covered porch for outdoor living. The well-appointed kitchen is complete with ample counter space and a convenient breakfast bar. There are three bedrooms and two baths on the same level across from the living-dining area. The owner's suite with a private bath and walk-in closet is at the back of the house for privacy, while there are two other good-sized bedrooms and a full bathroom in the front. While you'll love the Cherry as offered, there are lots of ways in addition to colors and finishes that you can make it your dream home. Let us show you how.



Wintergreen Real Estate
3079 Rockfish Valley Hwy
wintergreen, VA 22958
(434) 361-0500 (800) 325-2200
www.wintergreenrealestate.com

This information is deemed reliable but not guaranteed and has not been verified.

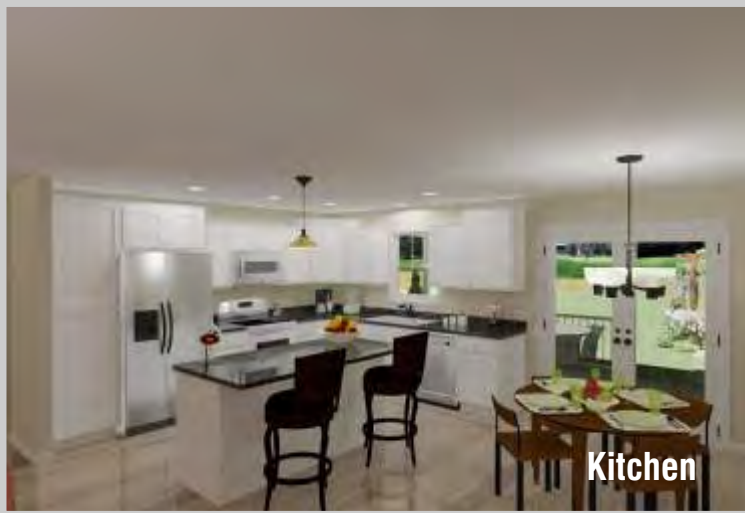


Floor Plan

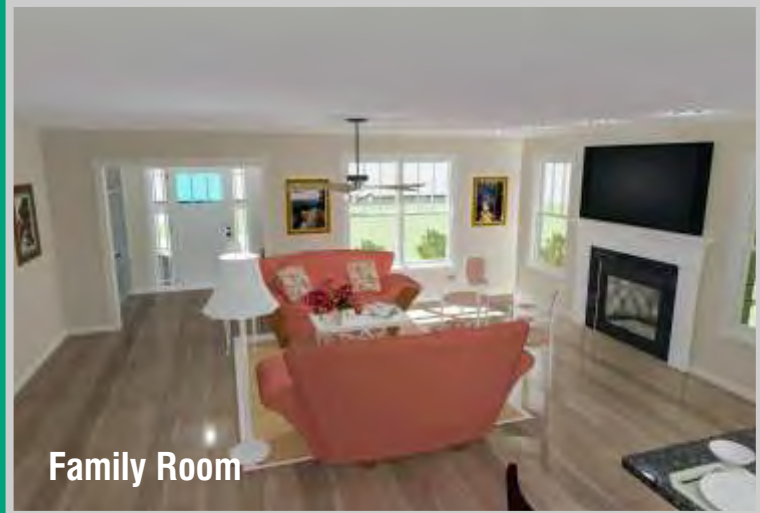


We will work with you to choose the options that fulfill your dreams.

Rear View showing covered porch



Kitchen



Family Room

Wintergreen Realty has teamed with Oaktree Builders to offer attractive, affordable new homes in Stone Orchard tailored to the Wintergreen lifestyle. The experts at Wintergreen Realty have been at Wintergreen since its inception and craftsmen at Oaktree Builders have been designing and building homes since 2003. We understand that building a home can seem overwhelming, so we try our best to keep the process simple. Once you choose your floor plan, you can make the decisions that make your new home uniquely yours. We will help you throughout the process to ensure your satisfaction with your new home.

Home prices include the lot and the following outstanding features:*

- Birch kitchen cabinets with soft-close doors & drawers plus rollout trays
- Granite countertop in kitchen; cultured marble in bathrooms
- Electric range, microwave, dishwasher and refrigerator
- Gas fireplace with white mantel
- Waterproof luxury vinyl plank flooring throughout the home
- Tile shower in master bathroom with fiberglass tub/showers in other areas of the home
- Glass shower door in master bathroom
- Attractive, easy-open white double-hung vinyl windows
- Trim package with elegant Rams-Crown profile
- High-efficiency 14-SEER heat pump
- 50-gallon electric water heater for plentiful hot water
- Energy-saving 2" x 6" exterior framed walls; 2" x 4" interior framed walls
- Long-lasting asphalt shingles
- Durable HardiPlank or similar product on exterior of home
- Ample Fiberglass insulation
- Extra storage space above garage
- Covered patio with handrail and steps to yard
- Low-maintenance asphalt driveway with concrete walk from driveway to front door
- Preparing yard by grading and seeding, plus an allowance for landscaping and a soil treatment prior to closing

**As custom builders, Oaktree Builders can personalize your home to meet your requirements. Premium lots and optional features are available. Your agent will work with you to ensure the home of your dreams at the most economical price.*

Call (434) 361-0500 or (800) 325-2200 or
go to www.wintergreenrealestate.com
for more information or to make an appointment.